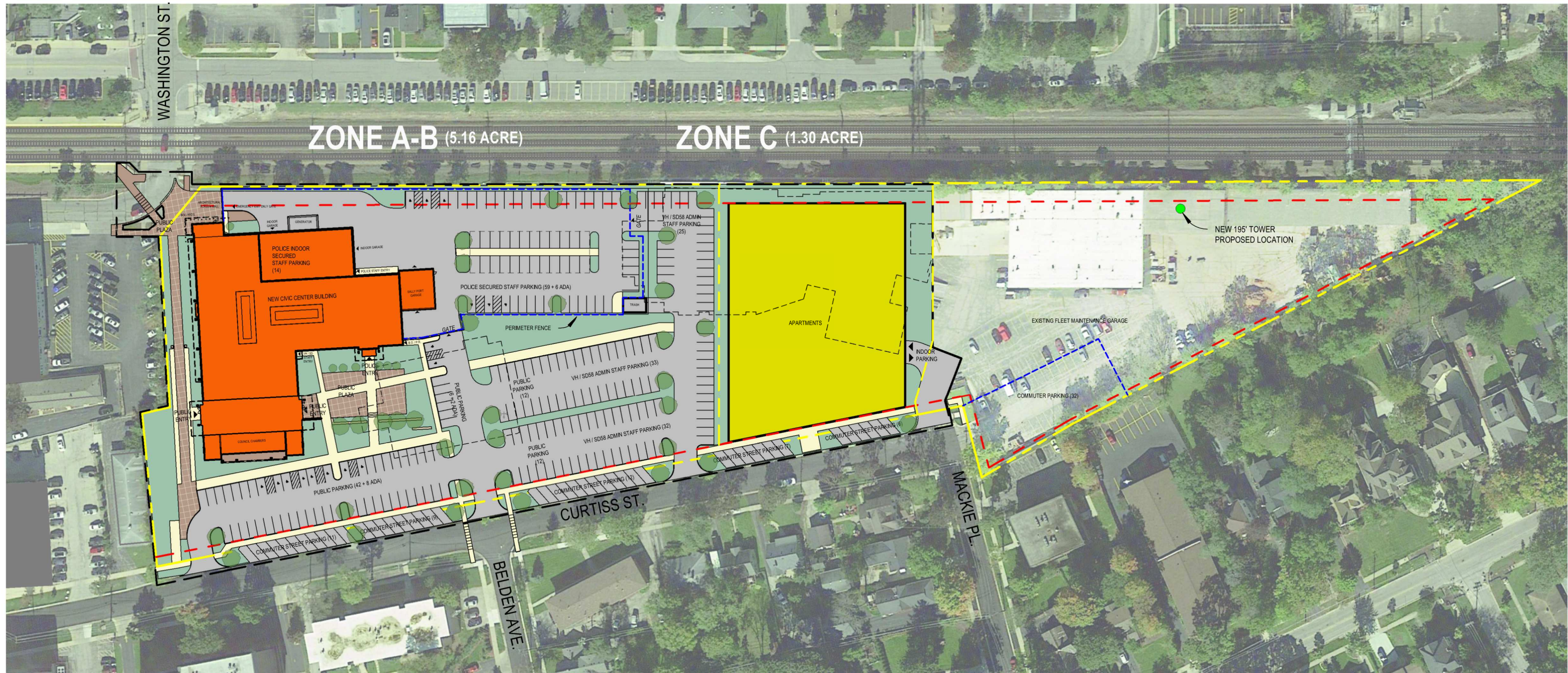


Downers Grove Civic Center

825 Burlington Ave, Downers Grove, IL 60515

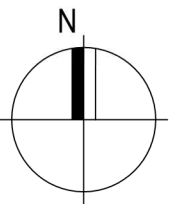


NEW VHPS BUILDING + SCHOOL DISTRICT 58 ADMINISTRATION + APARTMENT DEVELOPMENT

- NEW CIVIC CENTER BUILDING = 77,000 SF +/- (2 STORY + BASEMENT)
- SECURE POLICE STAFF PARKING = 79 SPACES (14 INTERIOR + 24 CARPORT + 41 EXTERIOR)
- VILLAGE HALL STAFF PARKING = 65 EXTERIOR SPACES
- SD58 STAFF PARKING = 25 EXTERIOR SPACES
- PUBLIC VISITOR PARKING = 82 EXTERIOR SPACES
- COMMUTER PARKING = 32 SPACES IN FLEET LOT+ 45 SPACES ALONG CURTISS ST
- FUTURE APARTMENT DEVELOPMENT= 43,908SF BUILDING FOOTPRINT (4-5 STORIES)

- PROPERTY LINE
- SETBACK LINE
- NEW FENCE LINE
- FALL ZONE LINE
- ZONE BOUNDARY

0' 100' 300'



SITE PLAN

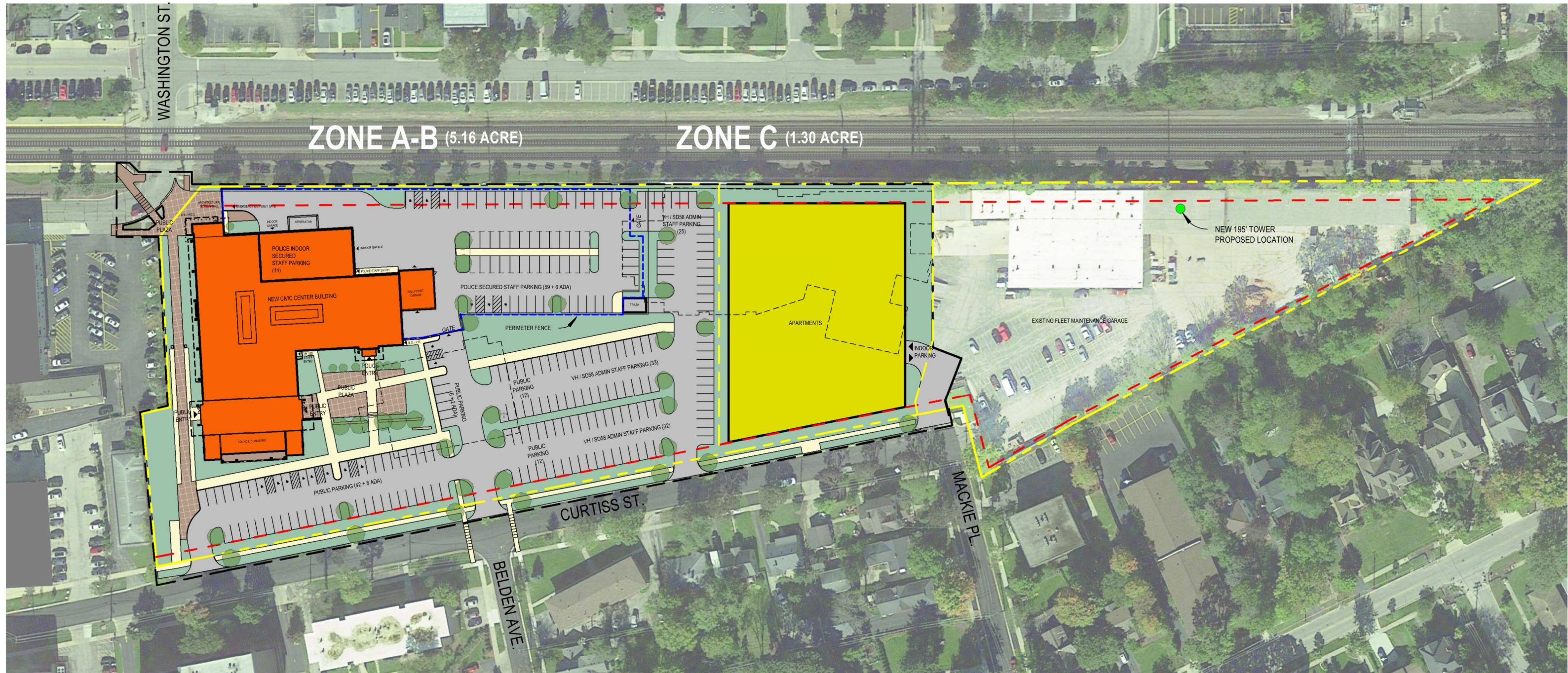
Village of Downers Grove
Job No. 22-3818.01

Published 03/03/22
©2022 FGM Architects Inc.

fgma

Downers Grove Civic Center

825 Burlington Ave, Downers Grove, IL 60515

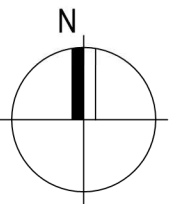


NEW VHPS BUILDING + SCHOOL DISTRICT 58 ADMINISTRATION + APARTMENT DEVELOPMENT

- NEW CIVIC CENTER BUILDING = 77,000 SF +/- (2 STORY + BASEMENT)
- SECURE POLICE STAFF PARKING = 79 SPACES (14 INTERIOR + 24 CARPORT + 41 EXTERIOR)
- VILLAGE HALL STAFF PARKING = 65 EXTERIOR SPACES
- SD58 STAFF PARKING = 25 EXTERIOR SPACES
- PUBLIC VISITOR PARKING = 82 EXTERIOR SPACES
- FUTURE APARTMENT DEVELOPMENT = 43,908SF BUILDING FOOTPRINT (4-5 STORIES)

- PROPERTY LINE
- SETBACK LINE
- NEW FENCE LINE
- FALL ZONE LINE
- ZONE BOUNDARY

0' 100' 300'



ALTERNATE SITE PLAN

Village of Downers Grove
Job No. 22-3818.01

Published 03/03/22
©2022 FGM Architects Inc.

fgma

Downers Grove Civic Center

825 Burlington Ave, Downers Grove, IL 60515



SCHEMATIC LANDSCAPE PLAN

DGCC Exteriors: Birdseye views from southeast



DGCC Exteriors: views from southeast



DGCC Exteriors: view from southwest



DGCC Exteriors: Birdseye view from southwest



DGCC Exteriors: views from northwest

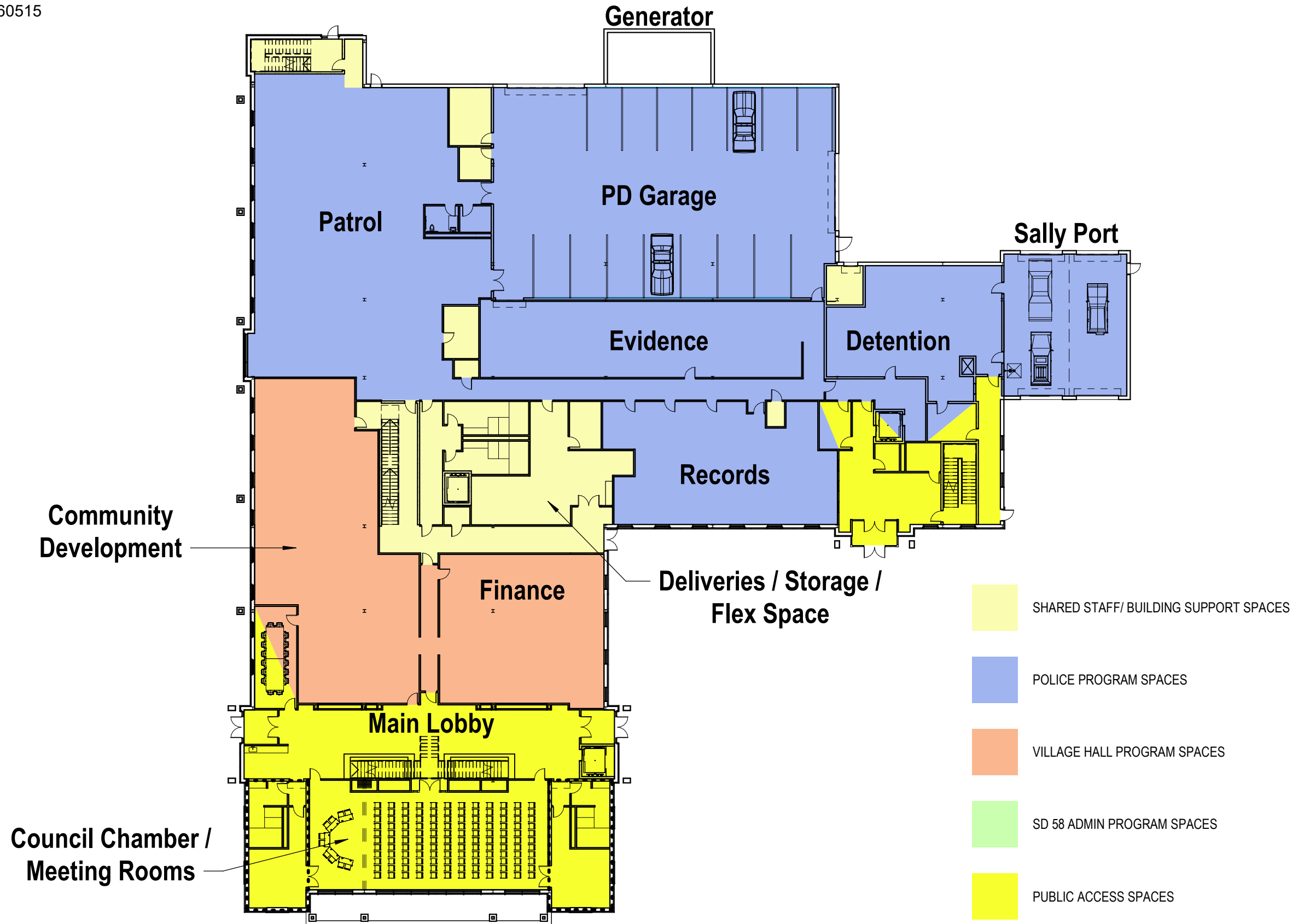


DGCC Exteriors: views from northeast



Downers Grove Civic Center

825 Burlington Ave, Downers Grove, IL 60515



FIRST FLOOR PLAN

SCALE: 1' = 30'
OVERALL AREA: 38,100 SF

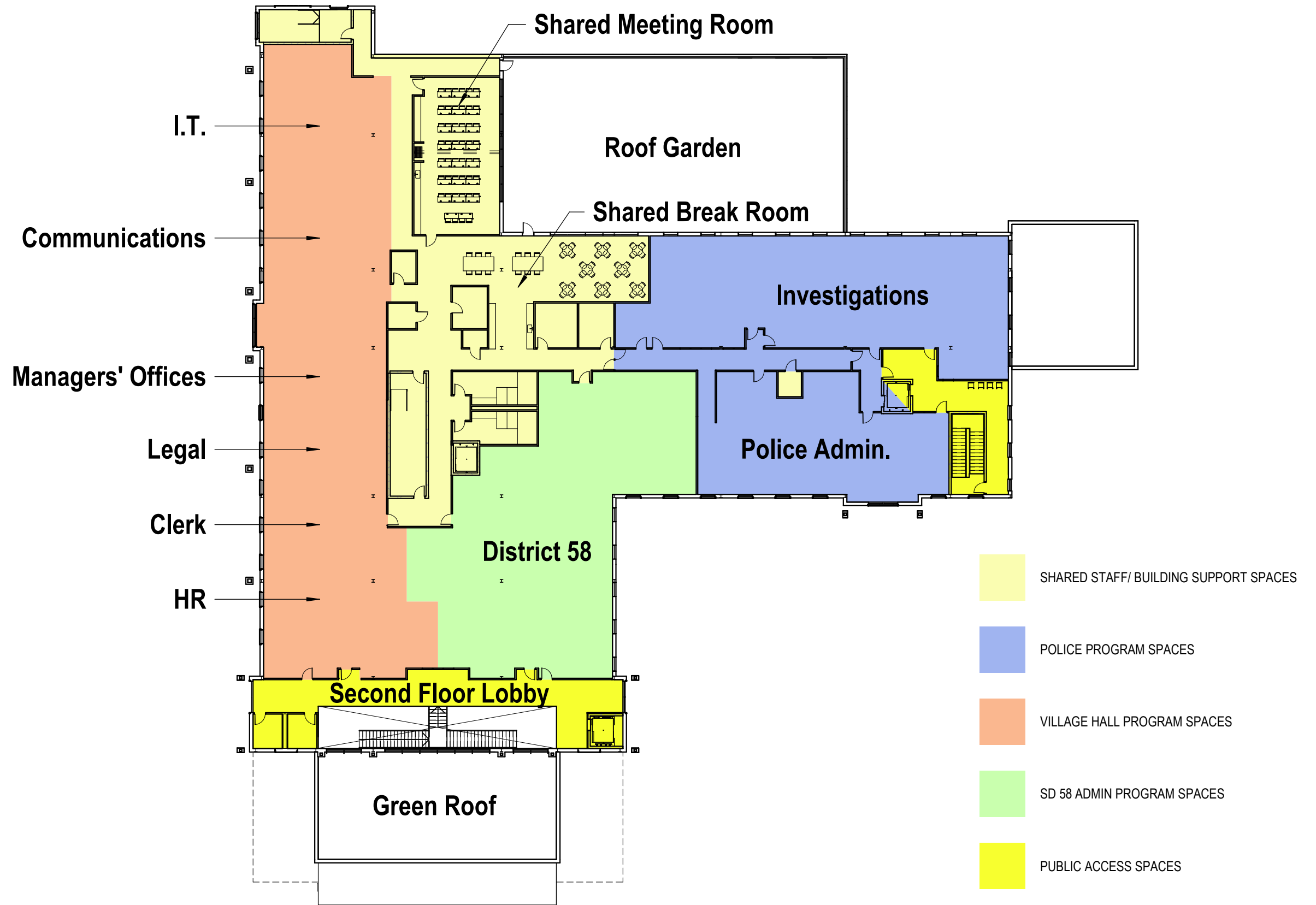
Village of Downers Grove
Job No. 22-3818.01

Published 03/03/22
©2022 FGM Architects Inc.



Downers Grove Civic Center

825 Burlington Ave, Downers Grove, IL 60515



SECOND FLOOR PLAN SCALE: 1" = 30'
OVERALL AREA: 27,800 SF (INCLUDING 800 SF LOBBY STAIR OPENING)

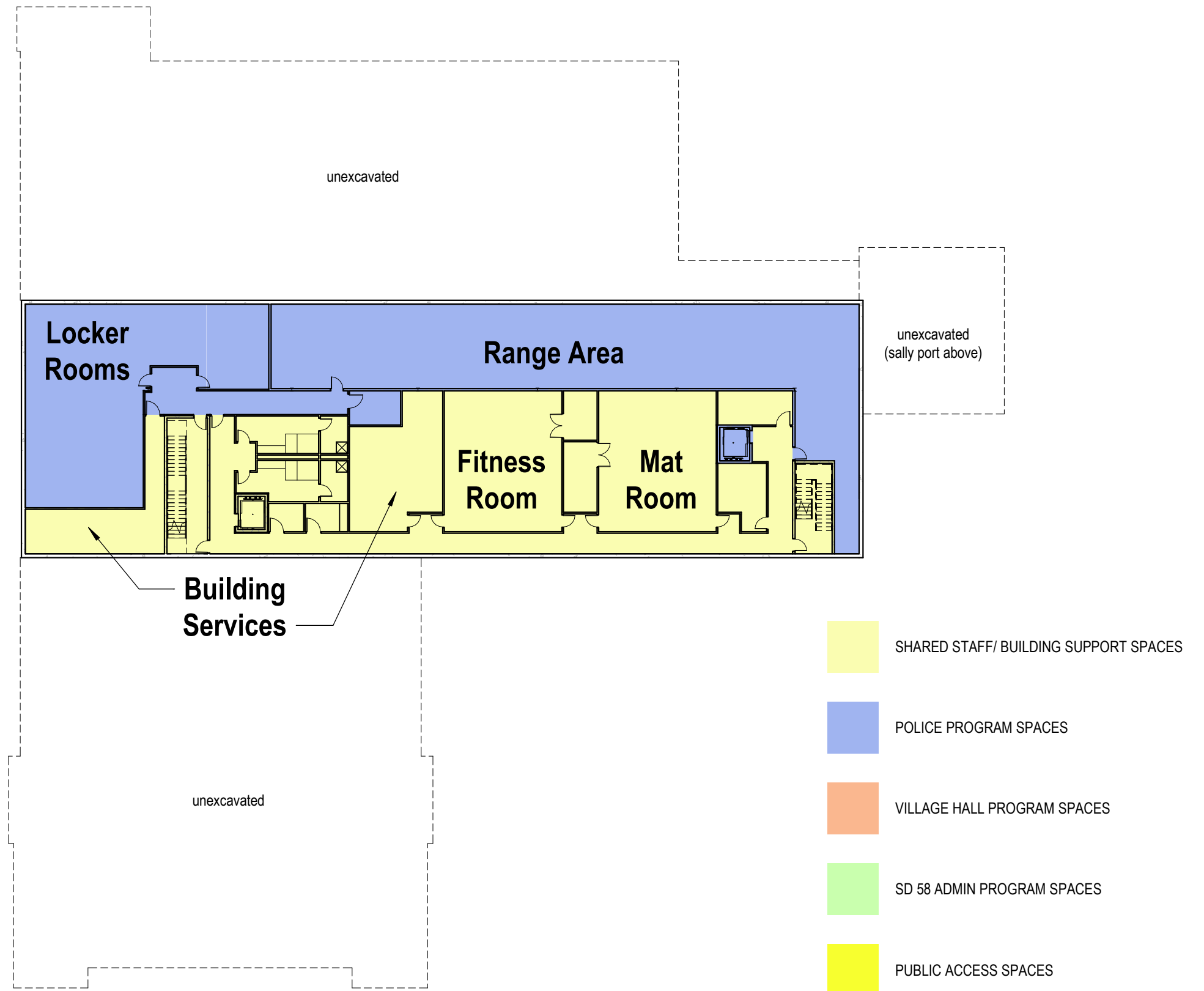
Village of Downers Grove
Job No. 22-3818.01

Published 03/03/22
©2022 FGM Architects Inc.



Downers Grove Civic Center

825 Burlington Ave, Downers Grove, IL 60515



BASEMENT

SCALE: 1" = 30"
OVERALL AREA: 14,100 SF

Village of Downers Grove
Job No. 22-3818.01

Published 03/03/22
©2022 FGM Architects Inc.

