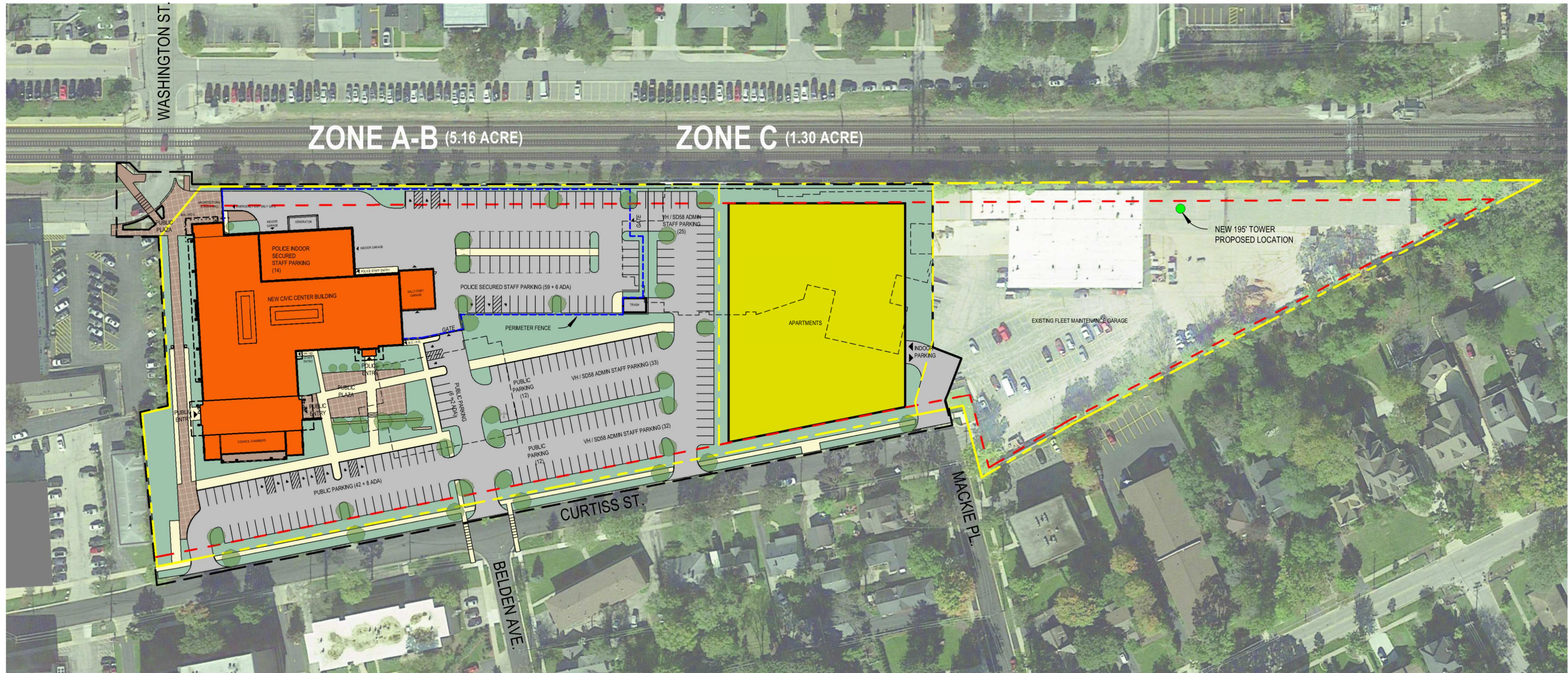


Downers Grove Civic Center

825 Burlington Ave, Downers Grove, IL 60515

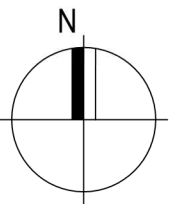


NEW VHPS BUILDING + SCHOOL DISTRICT 58 ADMINISTRATION + APARTMENT DEVELOPMENT

- NEW CIVIC CENTER BUILDING = 77,000 SF +/- (2 STORY + BASEMENT)
- SECURE POLICE STAFF PARKING = 79 SPACES (14 INTERIOR + 24 CARPORT + 41 EXTERIOR)
- VILLAGE HALL STAFF PARKING = 65 EXTERIOR SPACES
- SD58 STAFF PARKING = 25 EXTERIOR SPACES
- PUBLIC VISITOR PARKING = 82 EXTERIOR SPACES
- FUTURE APARTMENT DEVELOPMENT = 43,908SF BUILDING FOOTPRINT (4-5 STORIES)

- PROPERTY LINE
- SETBACK LINE
- NEW FENCE LINE
- FALL ZONE LINE
- ZONE BOUNDARY

0' 100' 300'



ALTERNATE SITE PLAN

Village of Downers Grove
Job No. 22-3818.01

Published 03/03/22
©2022 FGM Architects Inc.

fgma