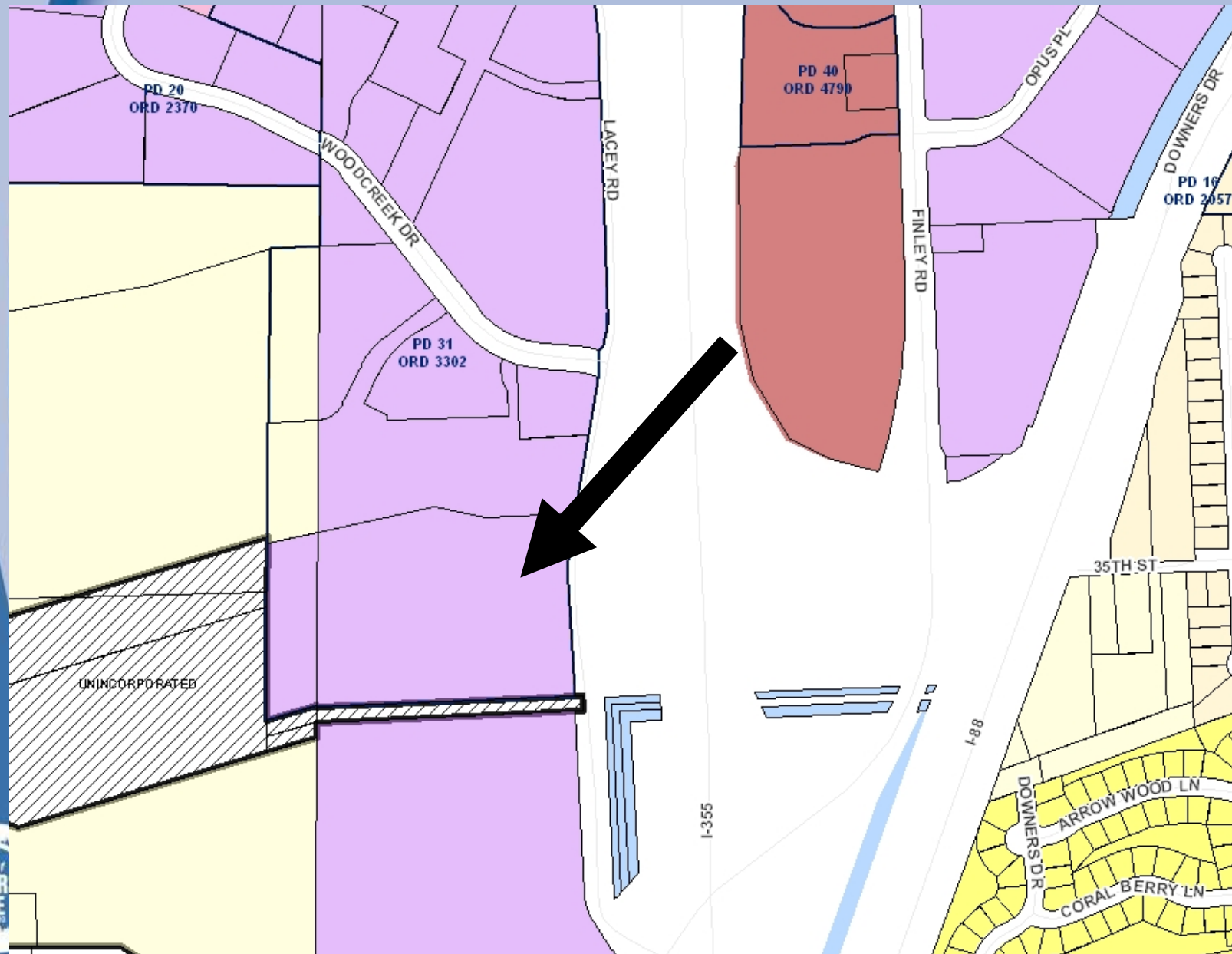


# **3500 Lacey Road Parking Expansion**

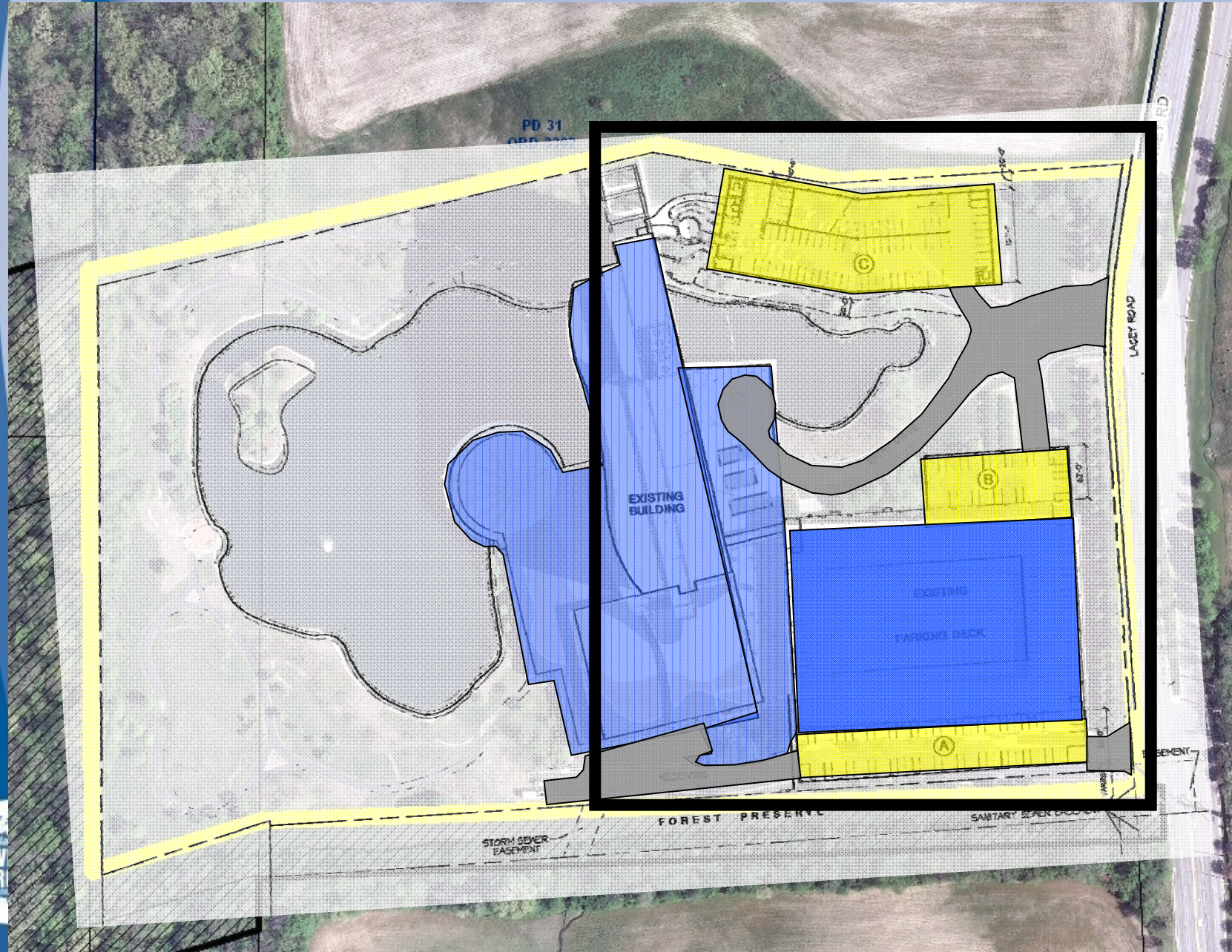
## **Planned Development Amendment**



# 3500 Lacey Road



# 3500 Lacey Road



# 3500 Lacey Road



# 3500 Lacey Road



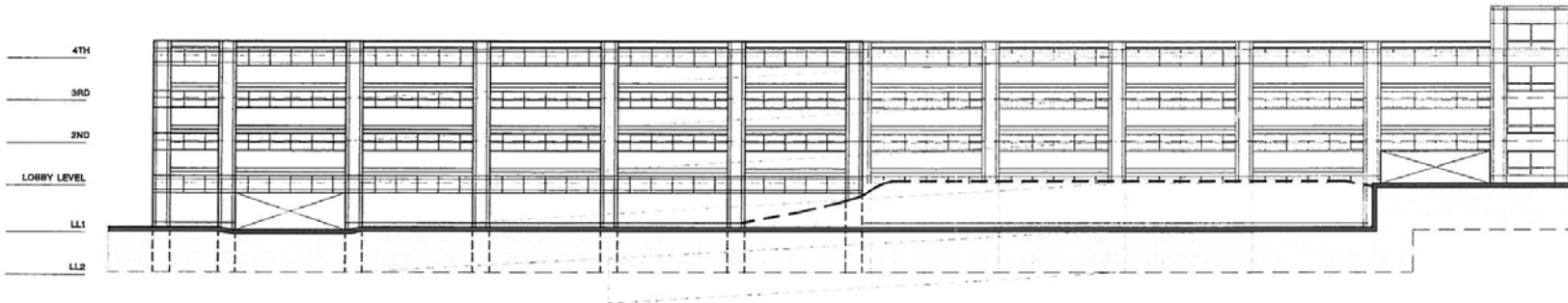
# 3500 Lacey Road



EAST ELEVATION - NORTH AND SOUTH ADDITIONS

1/8" = 1'-0"

\*\*\*NOTE\*\*\*  
TEXTURE AND COLOR OF NEW CONCRETE SHALL  
MATCH THE TEXTURE AND COLOR OF EXISTING PARKING STRUCTURE.  
PRECAST PANEL DESIGN OF ADDITIONS WILL BE IDENTICAL TO EXISTING.

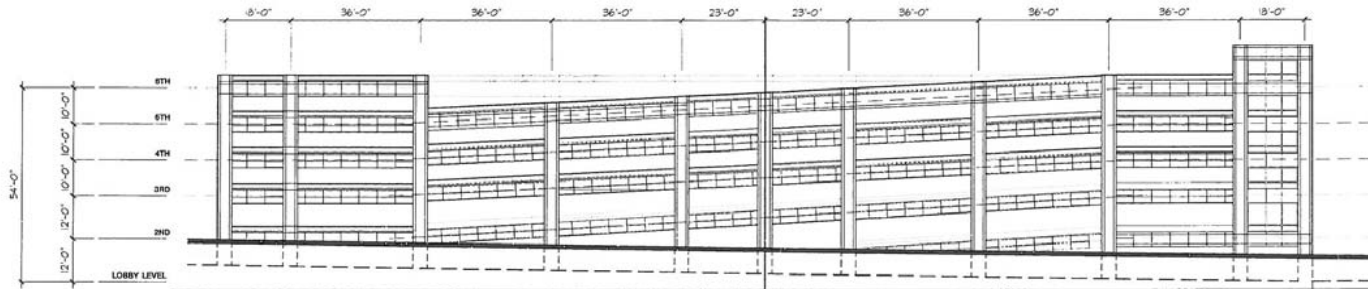


NORTH ELEVATION - NORTH ADDITION

1/8" = 1'-0"

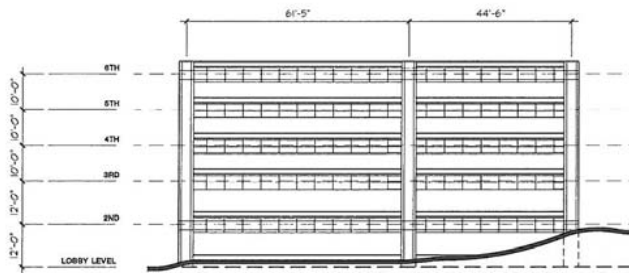


# 3500 Lacey Road



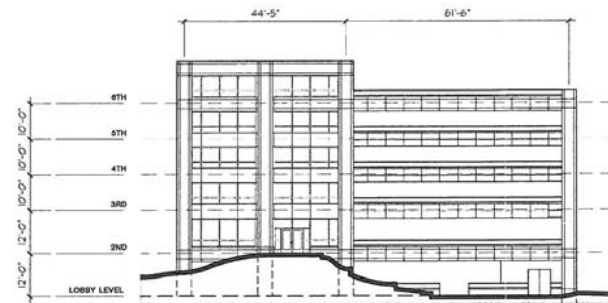
**NORTH - ELEVATION AT PARKING STRUCTURE**

1/8" = 1'-0"



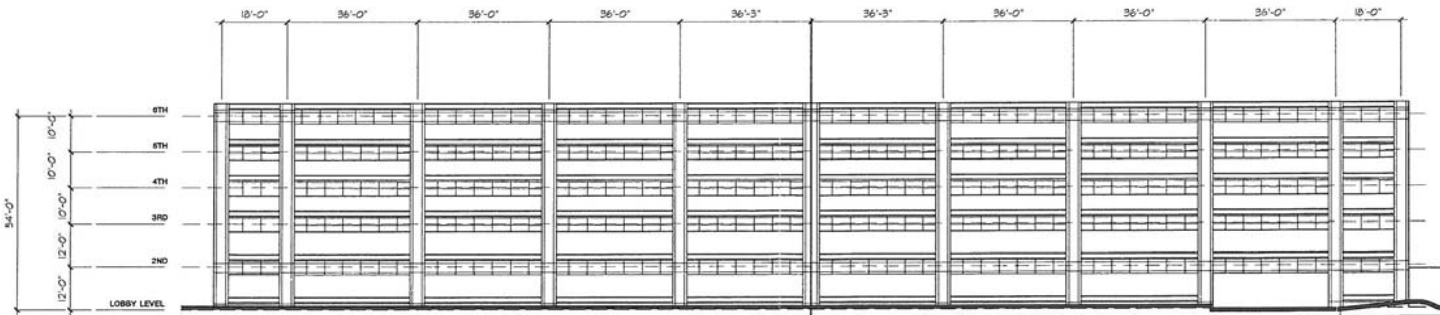
**EAST - ELEVATION AT PARKING STRUCTURE**

1/8" = 1'-0"



**WEST - ELEVATION AT PARKING STRUCTURE**

1/8" = 1'-0"



**SOUTH - ELEVATION AT PARKING STRUCTURE**

1/8" = 1'-0"

\*\*\*NOTE\*\*\*  
TEXTURE AND COLOR OF CONCRETE SHALL  
MATCH THE TEXTURE AND COLOR OF EXISTING PARKING STRUCTURE.



# **3500 Lacey Road Parking Expansion**

## **Planned Development Amendment**

