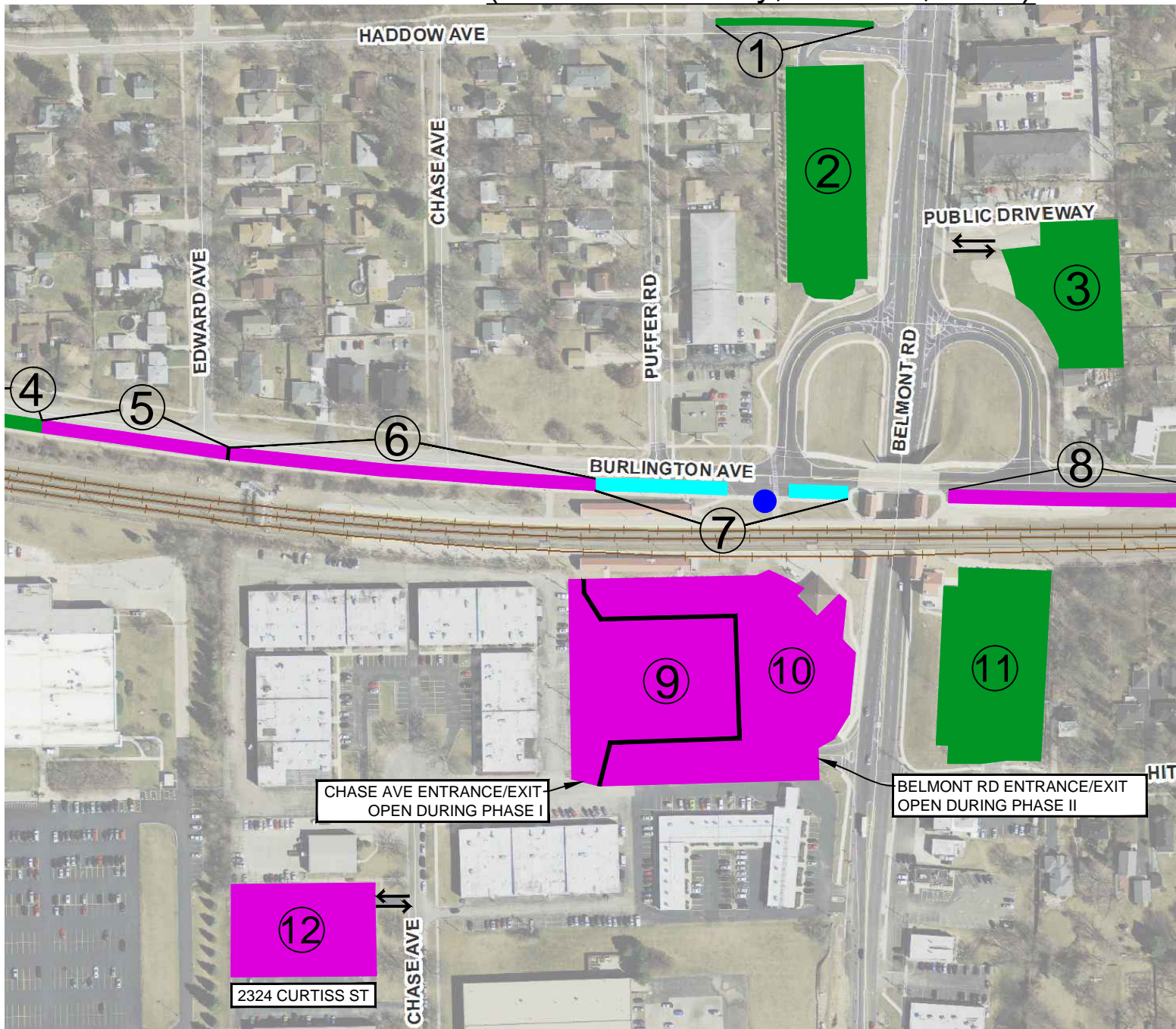


# Parking Lot H Improvements - Parking Guide During Construction (Effective Monday, June 22, 2015)



- ① DAILY-FEE DURING PHASES I & II
  - ② LOT J DAILY-FEE (UNCHANGED)
  - ③ DAILY-FEE AT TEMPORARY LOT DURING PHASES I & II (ACCESS FROM BELMONT RD)
  - ④ DAILY-FEE (UNCHANGED)
  - ⑤ DAILY-FEE CHANGED TO LOT G PERMIT DURING PHASES I & II
  - ⑥ LOT G PERMIT (UNCHANGED)
  - ⑦ LOT G PERMIT CHANGED TO ADA ACCESSIBLE PARKING DURING PHASES I & II
  - ⑧ LOT G PERMIT (UNCHANGED)
  - ⑨ LOT H PERMIT ONLY DURING PHASE I
  - ⑩ LOT H PERMIT ONLY DURING PHASE II
  - ⑪ LOT K DAILY-FEE (UNCHANGED)
  - ⑫ LOT H PERMIT AT 2324 CURTISS DURING PHASES I & II (ACCESS FROM CHASE AVE)
- PACE Bus Stop
  - █ PERMIT PARKING
  - █ DAILY-FEE PARKING
  - █ ADA ACCESSIBLE PARKING
- \*\*FLIP OVER FOR MORE\*\***  
**\*\*INFORMATION\*\***

## **Parking Lot H Improvements – Parking Guide During Construction**

### Project Summary

This project involves the reconstruction of commuter Parking Lot H, which is located at the southwest corner of the Belmont railroad crossing. Work includes full pavement replacement, storm sewer replacement, installation of a new and improved lighting system, and installation of a bio swale median. The new parking lot will also include an Americans with Disabilities Act (ADA) accessible north-south walkway and a higher capacity bike rack next to the station. The project will be funded by both the Village of Downers Grove and Metra.

**PHASE I OF THIS PROJECT WILL BEGIN MONDAY, JUNE 22, 2015. UPDATES WILL BE POSTED AT <http://www.downers.us/construction-updates/>**

### Phased Construction

Parking Lot H will be reconstructed in two phases. Please visit the Village's Construction Update webpage (mentioned above) for updated phasing dates. Here are some important temporary changes:

- **During Phase I, Parking Lot H will only be accessible via Chase Ave.**
- **During Phase II, Parking Lot H will only be accessible via Belmont Rd.**
- **Since space will be limited at Parking Lot H during Phases I and II, drop-offs shall only take place on Burlington Ave**
- **ADA Accessible parking will not be available at Parking Lot H during construction and will be relocated to Burlington Ave adjacent to the PACE bus stop.**
- **Please follow all traffic signs near Parking Lot H.**

### Impacts to Parking

Both daily-fee and permit parking for Parking Lot H and Parking Lot G will be impacted by construction of Parking Lot H. Please see the map on the reverse side which shows the permit and daily-fee parking locations during construction.

### PACE Bus Routes

PACE buses will not enter Parking Lot H during construction. All PACE bus routes will utilize the bus stop on Burlington Ave just west of Belmont Rd during construction.

### Belmont Rd/63<sup>rd</sup> St Park-n-Ride

Additional parking for the Belmont Station is available at PACE's Park-n-Ride located at 63<sup>rd</sup> St and Belmont Rd. Parking is free with paid bus fare. Please visit [www.pacebus.com](http://www.pacebus.com) and enter route no. 464 into the Route Finder tool for scheduling details.